

THE INTERNATIONAL REVIEW OF GRAPHIC DESIGN 80 SUMMER 2011



**HAT TRICK /
MARION
DEUCHARS**

To celebrate the 50th anniversary of the UK's Royal Shakespeare Company (RSC), the Royal Mail commissioned London-based studio Hat-Trick Design to create two sets of stamps.

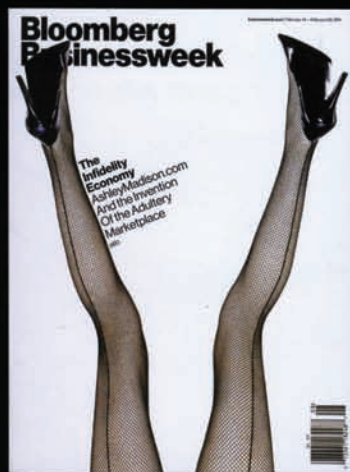
For the set pictured below, Hat-Trick collaborated with illustrator Marion Deuchars. She was asked to provide script lettering to illustrate dramatic black and white photographs from famous productions in the RSC's history. Hat-Trick's Jim Sutherland

comments that it is 'very unusual to have such a typographic set of stamps', given the challenges of the tiny canvas.

Deuchars says: 'Endeavouring to make the typography work at such an intimate scale was an ambitious undertaking ... However, we also knew it would create a distinct and engagingly graphic depiction of a very well known subject.' Stamp Designs © 2011 Royal Mail Group Ltd. Design by Hat-Trick Design. Typography by Marion Deuchars.



'New breeds of artist, designer and developer are joining the dots between technology and physical interaction.'
Robert Hodgin's 'Body Dysmorphia'



'Magazine design isn't about the design, it's about the strength of the ideas.'
Richard Turley, Bloomberg Businessweek



'Marion Deuchars made lettering for photographs of famous productions in the RSC's history.'
Written by hand

GREAT BRITAIN £17
9 770960 779070 80

